



**BST Coalition Annual Report 2014**

# Section 1

## Introduction

The Bonneville Shoreline Trail has been designated as Utah's Millennium Legacy Trail, as part of a White House initiative on the basis of our Governor's recommendation and the Utah Legislature recognized the trail during the 1999 General Session. The vision of the BST is a non-motorized trail that serves as an interface between the urban area and public lands along the Wasatch Front and will provide trail users with a recreational experience at a distance from motorized activities that is both safe and aesthetically pleasing. The Bonneville Shoreline Trail Coalition is an organization of entities, both citizen and governmental, representing the communities in Utah involved in promoting, planning and building the Bonneville Shoreline Trail (BST).

This report show the progress made in 2014 along the length of the trail. Work on the trail is performed by the different city, county and federal jurisdictions through which it passes.



Trail Miles	Proposed	Constructed to Date
Cache County	65	11.25
Box Elder County	35	0
Weber County	29	23.25
Davis County	56	18.5
Salt Lake County	56	27
Utah County	69	30
<b>BST Total Miles</b>	<b>310</b>	<b>110</b>



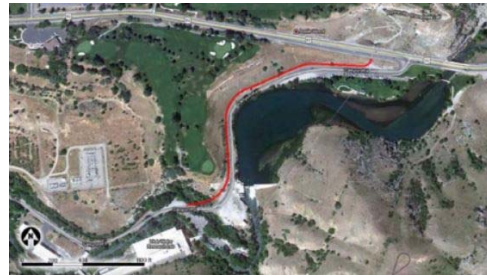
**County by County Progress Reports**

**Cache County**

Cache County held comprehensive trail planning meetings. Identifying routes for the BST going north from North Logan to Smithfield and Richmond was on the agenda.

Hyrum City is in the planning process for routes to connect to the BST at Blacksmith Fork Canyon, including plans to construct a connecting trail from the mouth of Blacksmith Fork up the canyon to a city park.

Logan City has completed two trail connections that link to the BST at the mouth of Logan Canyon. The first connection is a new trail along a part of Canyon Road next to First Dam. The other is grading and drainage improvements to the Logan Canyon Gateway Trail which connects to the BST at the mouth of Logan Canyon.



<b>Trail Miles</b>	<b>Proposed</b>	<b>Constructed to Date</b>
Cache County	65	11.25

For more information about BST planning in Cache County, contact Josh Runhaar at (435)755-1640 or [Josh.Runhaar@cachecounty.org](mailto:Josh.Runhaar@cachecounty.org).

**Box Elder County**

Box Elder County recently received a National Park Service Rivers, Trails, and Conservation Assistance grant to plan for trails including the BST along the bench between Brigham City, Perry, and Willard.

<b>Trail Miles</b>	<b>Proposed</b>	<b>Constructed to Date</b>
Box Elder County	35	0

For more information about BST planning in Box Elder County, contact Brian Carver at (435) 713-1420 or [brianc@brag.utah.gov](mailto:brianc@brag.utah.gov).

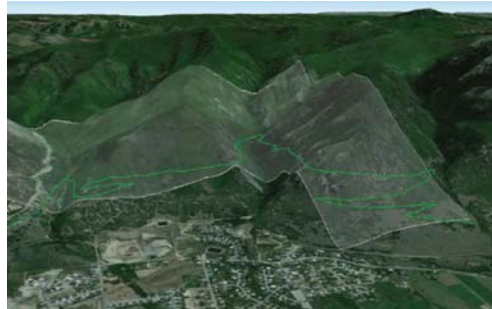
## Weber County

Finishing work was done on the new BST Connector between the Washington Heights Church in South Ogden and the town of Uintah. Several dozen volunteers from Wadman Construction came out for a day to smooth out and finish the single-track trail, which had been cut the year before by Ogden City's trail cat. They also installed a map kiosk at the trailhead, where the trail connects to a bike route along Skyline Drive that leads to the Beus Canyon BST Trailhead. Future plans are for a connection on the south to the Weber River Parkway and eventually to the BST at the mouth of Weber Canyon.



Weber Pathways is also supporting Uintah City in their effort to obtain permission from Union Pacific RR to widen one of their roadways in order to add bike/ped lanes. This will provide a 3-mile link from the BST Connector to the Weber River Parkway.

Construction began on a 5-mile trail segment that connects the BST at the North Ogden Divide to the northern terminus of the trail in Ogden City. The route is located entirely on Forest Service land. The trail route was flagged by IMBA Trail Solutions in February 2014.



In the spring the Forest Service dispatched their Resource Specialists to perform a small NEPA review (the project qualified for a categorical exclusion under NEPA rules). In late September Weber Pathways received the Decision Memo from the Forest Service District Ranger that approved the proposal for construction of the trail. There are design features and mitigation measures that are required. A brief summary of the most significant are as follows:

- The trail design will be to Class 3 under the Pack and Saddle emphasis
- Avoid tree removal as much as possible. Cutting trees up to 12" will be allowed except for Mountain Mahogany.
- The use of a trail dozer and mini-x are allowed except for the large area where *Draba Burkei* was discovered. The design of the BST trail in the large area of *Draba* will be for minimal disturbance with one length of trail with no switchbacks.

Within two weeks of the decision memo Alpine Trails was under contract and began construction in North Ogden Canyon. With the help of Weber Pathways’ volunteer crews about 1.25 miles of trail was completed before the weather stopped construction. The plan is to resume construction in 2015 as soon as the weather allows. The major funding for this project comes from grants from Weber County RAMP and from REI.



The completion of this segment will result in Weber County having approximately 26 continuous miles of the BST single-track with only two places where road crossings are required. The north terminus of the trail is Pleasant View City and the south terminus is Beus Canyon in Ogden.

2014 marks the completion of a multi-year project to update and dramatically expand the signage of the Ogden trail system including the portion of the BST in the Ogden area. Thanks to a RAMP grant with support from Ogden City, Weber State University and most importantly Weber Pathways. This project was able to add and update over 700 new signs and 200 new posts to enhance the hiking and biking experience.



The single most significant enhancement for the BST is the introduction of “Trailhead to BST” signage from every trailhead in the Ogden Area. This signage starts at each trailhead and continues with clear signage leading people to and from the BST. Because of their locations on the mountain some of the posts had to be brought in on horseback.

Trail Miles	Proposed	Constructed to Date
Weber County	29	23.25

For information about BST planning in the Weber County portion, contact Mark Benigni, Weber Pathways Executive Director, at (801) 393-2304 or [mark@weberpathways.org](mailto:mark@weberpathways.org).

**Davis County**

Fruit Heights City has completed approximately 1 mile of the BST beginning at Bair Canyon and extending south to the Forest Service property that lies between Fruit Heights and Farmington.

Congress passed a bill directing the US Forest Service to convey 100 acres of land to Fruit Heights for no consideration. Use of the land in limited to public purposes and a trail easement for the BST was preserved.

The BST connector route is on the fire break road in Centerville. Motorized use of the fire break road is permitted in Centerville along with the “Bowl Area” just below the “V” on the mountain. Centerville’s Trails Committee has worked with the City to put new signs all along the fire break road to inform motorized users of the permitted access in an attempt to curb illegal abuse of the area off of the road. In addition to the signs, the Trails Committee has coordinated a few service projects to reclaim some of the scared and eroded spurs that have been cut off of fire break road.

Trail Miles	Proposed	Constructed to Date
Davis County	29	18.5

For information about BST planning in the Davis County portion, contact Barry Burton at 801-451-3279 or [barry@co.davis.ut.us](mailto:barry@co.davis.ut.us).

**Salt Lake County**

The Trust for Public Land and the Forest Service continue to work toward acquiring some land in Mill Creek Canyon, which includes the Rattlesnake Gulch mining claim. This parcel is traversed by the popular Rattlesnake trail, which is the proposed route for BST in this area.

In May Salt Lake County sponsored a weed pull along the BST beginning at the trailhead for Parleys and Grandeur Peak. Volunteers pulled approximately 1,750 lbs of myrtle spurge. Also occurring on this site was a monopole replacement for the cell tower located on the northeastern portion of the property. The contractors were very careful not to disturb or destroy any natural vegetation on the open space.

Salt Lake County Parks & Recreation continued to work with the US Forest Service for the development of the BST from the Z Trail to the Mount Olympus Trailhead, and this section of trail is complete. The BST alignment from the Z Trail to Neff’s Canyon was flagged, and the Z Trail stairs at Thousand Oaks Drive, which is the neighborhood access, were reconstructed. The BST



alignment from the Mount Olympus Trailhead to Heughs Canyon was explored, and partially flagged.

<b>Trail Miles</b>	<b>Proposed</b>	<b>Constructed to Date</b>
Salt Lake County	56	23

For information about BST planning in Salt Lake County, contact Angelo Calacino at 801-468-2534 or [acalacino@slco.org](mailto:acalacino@slco.org).

**Utah County**

No updates.

<b>Trail Miles</b>	<b>Proposed</b>	<b>Constructed to Date</b>
Utah County	69	30

For information about BST planning in the Utah County portion, contact Jim Price at 801-229-3848, [jprice@mountainland.org](mailto:jprice@mountainland.org) or Max Mitchell at 801-852-6605, [mmitchell@provo.utah.gov](mailto:mmitchell@provo.utah.gov)



## Section 3

### About the Bonneville Shoreline Trail Coalition

#### Background

The Bonneville Shoreline Trail Coalition is an organization of entities, both citizen and governmental, representing the communities in Utah involved in promoting, planning and building the Bonneville Shoreline Trail (BST). The Coalition was formed on an ad hoc basis in 2001, and formalized and incorporated in 2003.

#### Trustees

Dave Rayfield – Cache Trails Coalition  
 Barry Burton – Davis County Trail Committee  
 Jim Byrne – Bonneville Shoreline Trail Committee  
 Geoff Ellis – Weber Pathways  
 Jim Price – Mountainland Association of Governments

#### Organization Members

Bear River Association of Governments (BRAG)	Draper City
Brigham City	Sandy City
Bountiful City	Holladay City
Cache County	Salt Lake City
Cache Metro Planning Organization	Cottonwood Heights City
Cache Trails Coalition	Herriman City
Centerville City	Mountainland Association of Governments (MAG)
City of Logan	Provo City
North Logan City	Orem City
North Ogden City	Weber Pathways
Utah Conservation Corps	Ogden Trails Network
South Weber City	Ogden City
Layton City	Weber County Planning Department
Kaysville City	State Division of Parks & Recreation
Fruit Heights City	U. S. Forest Service
Davis County	Natural Resources Conservation Service (NRCS) & Great Salt Lake RC&D
Farmington Trails Committee	The Trust for Public Land
City of North Salt Lake	Utah Rocky Mountain Bikers
Salt Lake County Bonneville Shoreline Trail Committee	
Salt Lake County	