



BST Coalition Annual Report 2013

BST Coalition Annual Report 2013
Table of Contents

Introduction..... 2
Progress Reports 4
 BST Committee General Efforts 4
 County by County Progress Reports..... 5
 Cache County 5
 Box Elder County..... 5
 Weber County 6
 Davis County 9
 Salt Lake County..... 9
 Utah County 10
About the Bonneville Shoreline Trail Coalition..... 11
 Background 11
 Trustees..... 11
 Organization Members..... 11

Section 1

Introduction

The Bonneville Shoreline Trail has been designated as Utah's Millennium Legacy Trail, as part of a White House initiative on the basis of our Governor's recommendation and the Utah Legislature recognized the trail during the 1999 General Session. The vision of the BST is a non-motorized trail that serves as an interface between the urban area and public lands along the Wasatch Front and will provide trail users with a recreational experience at a distance from motorized activities that is both safe and aesthetically pleasing. The Bonneville Shoreline Trail Coalition is an organization of entities, both citizen and governmental, representing the communities in Utah involved in promoting, planning and building the Bonneville Shoreline Trail (BST).

This report show the progress made in 2013 along the length of the trail. Work on the trail is performed by the different city, county and federal jurisdictions through which it passes.



| Trail Miles | Proposed | Constructed to Date |
|------------------------|------------|---------------------|
| Cache County | 65 | 11.25 |
| Box Elder County | 35 | 0 |
| Weber County | 29 | 22 |
| Davis County | 29 | 18.5 |
| Salt Lake County | 56 | 25 |
| Utah County | 69 | 30 |
| BST Total Miles | 283 | 106.75 |



BONNEVILLE SHORELINE TRAIL

Section 2

Progress Reports

BST Committee General Efforts

Contacts:

Jim Byrne – Bonneville Shoreline Trail Committee

Dave Roth – Bonneville Shoreline Trail Committee

The Bonneville Shoreline Trail Committee (BSTC) is a member of the Bonneville Shoreline Trail Coalition and focuses its efforts in Salt Lake County.

The BSTC has continued to work recruiting volunteers and coordinating efforts among coalition members. The BST volunteer mailing list now has 734 members. The list is used to direct volunteers to opportunities with our partners along the length of the trail and to inform trail users about trail detours and closures.

The BSTC organized five trail work days during 2013 on the newest segment of the BST on the north slope of Mount Olympus; 114 volunteers provided 450 volunteer hours. The BSTC provided crew leaders and tools for volunteers. The BSTC also supported a National Trails Day event on the same section of trail with approximately 90 volunteers and staff.

For information about the BST contact Dave Roth at 801-824-5339 or bonnevilleshorelinetrail@gmail.com or contact Jim Byrne at 801-582-5631 or jim.byrne@yahoo.com.

County by County Progress Reports

Cache County

Contacts:
 AJ Luce – North Logan City
 Russ Akina – Logan City
 Josh Runhaar – Cache County

Logan Trail Connections

Cache County completed a trail connection between the BST and the River Trail in Logan Canyon. This project included a bridge over the Logan River, an underpass under a UDOT bridge adjacent to the river, and improvements to ~.25 miles of trail.



Logan Trail Upgrades

Logan City crews performed trail bed maintenance and constructed a block retaining wall on a switchback section of the BST above First Dam.

Logan Trail Connections

In October of 2013, the Logan Municipal Council authorized \$1.7 million to connect City trail systems. In March 2014, construction will commence with the Canyon Road First Dam Section Trail which will connect to the BST Trailhead at the mouth of Logan Canyon. The First Dam Section trail project will connect to and follow the former Logan & Northern canal corridor for approximately 1.3 miles along Canyon Road in Logan.

Millville Trail Access

Cache County is finalizing agreements with the Utah DWR to maintain permanent access to the BST from Millville Canyon to Blacksmith Fork Canyon. There are trail heads and parking area located on each end of this trail segment.

| Trail Miles | Proposed | Constructed to Date |
|--------------------|-----------------|----------------------------|
| Cache County | 65 | 11.25 |

For more information about BST planning in Cache County, contact Josh Runhaar at (435)755-1640 or Josh.Runhaar@cachecounty.org.

Box Elder County

Contacts:
 Kristy Law– Brigham City
 Brian Carver – Bear River Association of Governments

Trail Planning

Box Elder County does not have any official BST segments. However, several communities are adding the trail to various local plans, including Willard and Perry Cities. Brigham City has also been informally discussing future plans for the trail.

| Trail Miles | Proposed | Constructed to Date |
|------------------|----------|---------------------|
| Box Elder County | 35 | 0 |

For more information about BST planning in Box Elder County, contact Brian Carver at (435) 713-1420 or brianc@brag.utah.gov.

Weber County

Contacts:

- Geoffrey Ellis - Weber Pathways
- Mark Bunker - Weber Pathways
- Mark Benigni – Weber Pathways
- Michael Joseph – Ogden Trails Network

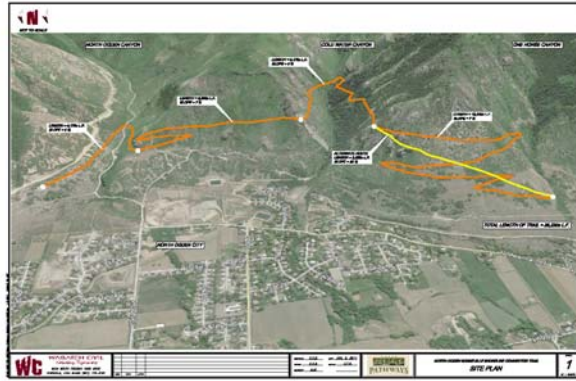
New Trail in Pleasant View

In North Ogden 1.6 miles of trail was added to the 3.4 miles of the new trail constructed in 2012. Design and construction of this new section of trail were completed by the International Mountain Bike Association (IMBA) along with local volunteers. A major part of the funding was provided by a Weber County RAMP grant. A trail cat was rented from Ogden City for only its operational cost. The latest section of trail was constructed in a scenic section of property owned by Pleasant View City. Pleasant View also added a trail from a trailhead in their city to the BST. Additionally they constructed a kiosk at the trailhead where the trail can be accessed at its western terminus. The new section of the BST from North Ogden Divide Road to Pleasant View has become extremely popular. Using the latest techniques in trail design and construction is proving to provide a durable trail as it withstands foot, bicycle and equestrian traffic in all weather conditions.



North Ogden Trail Alignment

A rough design for a trail has been created that will connect the new North Ogden section to the northern terminus of the trail in Ogden City. This 5-mile trail segment will be located entirely on Forest Service land. The trail route between the North Ogden Divide and One-Horse Canyon will be flagged by IMBA Trail Solutions in February. The Forest Service supports this segment of the trail and will be ready to dispatch their Resource Specialists to perform a small NEPA review as soon as the snow melts. Once the NEPA is approved there is a 60 day comment period. If all goes well construction could start in late summer. This connector trail will result in Weber County having approximately 26 continuous miles of the BST with only two places where road crossings are required. The north terminus of the trail is Pleasant View City and the south terminus is Beus Canyon in Ogden.



Comprehensive Trail Signage Project

This year the Ogden Trails Network (OTN) is working to update the entire signage system along the 75 miles of Ogden area trails including the BST. This update includes adding or replacing over 250 posts and installing or replacing over 500 signs. With respect to the BST they have added new signs and posts to improve trail safety and clarity, placed signs on posts already installed but not having signage, and replaced all old signage. We have dramatically enhanced the signage at the 12th street underpass, Canyon Trailhead, Valley Drive, Rainbow Gardens and Rainbow Trailhead. This makes the crossing between the north and south parts of BST in Ogden much clearer and safer than before. A key addition is “BST connector direction signage” pointing people to the BST. Every trailhead along the east side of Ogden now has specific BST connector signage directing people to the BST from that trailhead. The project is 70% complete and will be completed by mid-year 2014. The funding is through a RAMP grant with support and of Ogden City, Weber Pathways, Front Climbing, and Weber State University.



Adopt-a-Trail

Ogden City and the OTN have developed an adopt-a-trail program with 29 segments including the BST in the Ogden foothills. These volunteer groups commit 50 hours a year to maintenance, repair, clean-up and at least one special improvement project. This is supported by the City’s Public Ways and Parks Department and Planning Department.

New WSU Trail

The College of Science under Dr. Matty is developing, with the help of Ogden City and OTN, a new “Interpretive Trail” that will educate the students and citizens of Ogden about the dynamic Wasatch Front and provide an additional hiking access to the BST from the Skyline Trailhead above Weber State University.

BST South Connector

A new sustainable alignment was begun on the BST Connector in South Ogden. Rough construction was completed on the new trail through land owned by the Washington Heights Church, as well as a connecting loop trail on the property. Ogden City’s trail cat was used to cut the trail during the summer, and a volunteer group from Eide Bailly began finishing off the trail in the fall. Much work remains to be done, but there are scout troops and other volunteers waiting to complete the trail in 2014, and it is already passable to foot traffic. The new trail is a wide single-track that climbs gently through the oak brush, avoiding the steep slopes and private property issues of the old route.



South Weber Planning

Weber Pathways’ BST South Committee has not been able to make progress in obtaining land or easements along the proposed foothill route, which consists mostly of private property. Therefore it has been decided to wait until some of the landowners are more amenable to negotiation, and to focus 2014’s efforts on making sure that a trail connection at the mouth of Weber Canyon is included in all long-term transportation improvement plans.

| Trail Miles | Proposed | Constructed to Date |
|--------------|----------|---------------------|
| Weber County | 29 | 22 |

For information about BST planning in the Weber County portion, contact Mark Benigni, Weber Pathways Executive Director, at (801) 393-2304 or mark@weberpathways.org, Mark Bunker, Weber Pathways board member, at mark.bunker@autoliv.com, or Geoff Ellis, Weber Pathways board member, at gellis@stanfordalumni.org.

Davis County

Contacts:
 Barry Burton – Davis County Trails Committee

Alignment Planning

Davis County completed a pre-NEPA study on sections of the BST that will be constructed above Bountiful, North Salt Lake and South Weber. This work established a preliminary alignment and provided preliminary impact analysis in preparation for performing an Environmental Assessment.



| Trail Miles | Proposed | Constructed to Date |
|--------------|----------|---------------------|
| Davis County | 29 | 18.5 |

For information about BST planning in the Davis County portion, contact Barry Burton at 801-451-3279 or barry@co.davis.ut.us.

Salt Lake County

Contacts:
 Scott Earl- Sandy City Parks and Recreation
 Brad Jensen- Draper City
 Angelo Calacino- Salt Lake County

Mount Olympus

Salt Lake County and the U.S. Forest Service completed work on the 2.5 mile segment from Mt. Olympus to the Z Trail. Crews from the U.S. Forest Service and Cottonwood Canyons Foundation spent weeks on the trail, cutting in and finishing the trail. They were supported by the BST Committee which organized five trail work days with 114 volunteers providing 450 volunteer hours. A large volunteer work day was also held on National Trails Day, with 65 volunteers and over 25 staff from supporting organizations.



Sandy Trail Extension

Sandy City has completed the design & alignment work for the BST from Hidden Valley Park to Bell Canyon Reservoir. In 2014, they will be acquiring property and preparing to build the trail. The BST is very important to Sandy City residents, elected officials, and is a top priority of Parks & Recreation. Important to note, there are quite a few sections of the future trail that are privately held which will require an agreement to purchase property or obtain easements.

Sandy Maintenance

In 2013 Sandy City did maintenance on the BST east of Hidden Valley Park and connecting to Draper City on the south. The bridge crossing Little Willow and connecting trails were leveled and re-graded and some check dams were installed. Also, some wash out areas east of the park were re-graded and restored.

BST Extension to Holladay

Salt Lake County and the U.S. Forest Service have a planned alignment to extend the BST from the Mount Olympus Trailhead south to Heugh’s Canyon. Holladay City is negotiating an easement across 20 of land at the top of Canyon Winds Lane in the Heugh’s Canyon area. The City also owns an additional 15 acres that abuts this property.



| Trail Miles | Proposed | Constructed to Date |
|--------------------|-----------------|----------------------------|
| Salt Lake County | 56 | 23 |

For information about BST planning in Salt Lake County, contact Angelo Calacino at 801-468-2534 or acalacino@slco.org.

Utah County

- Contacts:
- Kerry Smith – Utah Rocky Mountain Bikers
- Jim Price – Mountainland Association of Governments

No progress to report for 2013.

| Trail Miles | Proposed | Constructed to Date |
|--------------------|-----------------|----------------------------|
| Utah County | 69 | 30 |

For information about BST planning in the Utah County portion, contact Jim Price at 801-229-3848, jprice@mountainland.org or Max Mitchell at 801-852-6605, mmitchell@provo.utah.gov

Section 3

About the Bonneville Shoreline Trail Coalition

Background

The Bonneville Shoreline Trail Coalition is an organization of entities, both citizen and governmental, representing the communities in Utah involved in promoting, planning and building the Bonneville Shoreline Trail (BST). The Coalition was formed on an ad hoc basis in 2001, and formalized and incorporated in 2003.

Trustees

Dave Rayfield – Cache Trails Coalition
 Barry Burton – Davis County Trail Committee
 Jim Byrne – Bonneville Shoreline Trail Committee
 Geoff Ellis – Weber Pathways
 Jim Price – Mountainland Association of Governments

Organization Members

| | |
|---|--|
| Bear River Association of Governments (BRAG) | Draper City |
| Brigham City | Sandy City |
| Bountiful City | Holladay City |
| Cache County | Salt Lake City |
| Cache Metro Planning Organization | Cottonwood Heights City |
| Cache Trails Coalition | Herriman City |
| Centerville City | Mountainland Association of Governments (MAG) |
| City of Logan | Provo City |
| North Logan City | Orem City |
| North Ogden City | Weber Pathways |
| Utah Conservation Corps | Ogden Trails Network |
| South Weber City | Ogden City |
| Layton City | Weber County Planning Department |
| Kaysville City | State Division of Parks & Recreation |
| Fruit Heights City | U. S. Forest Service |
| Davis County | Natural Resources Conservation Service (NRCS) & Great Salt Lake RC&D |
| Farmington Trails Committee | The Trust for Public Land |
| City of North Salt Lake | Utah Rocky Mountain Bikers |
| Salt Lake County Bonneville Shoreline Trail Committee | |
| Salt Lake County | |